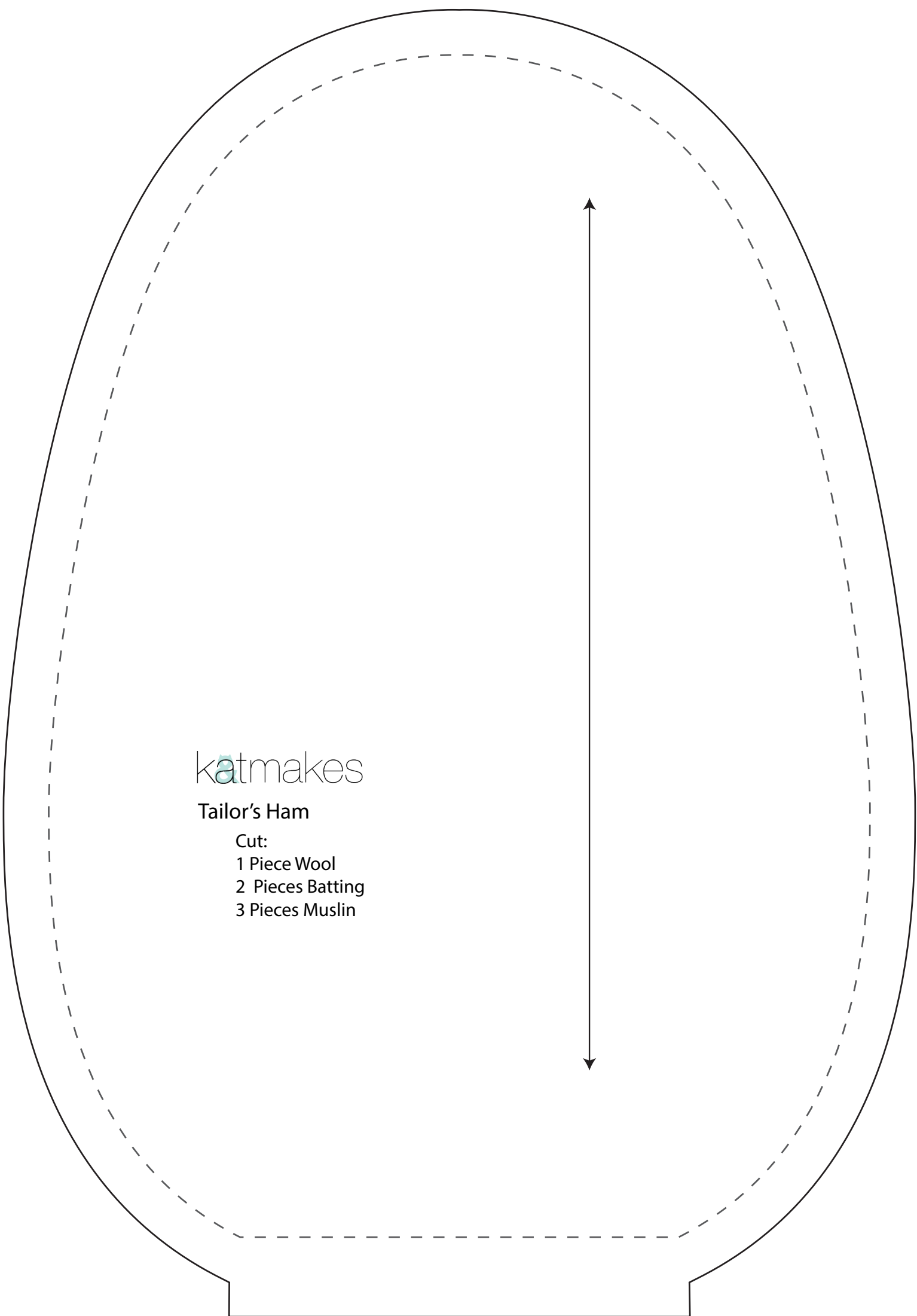


katmakes

Large Tailor's Seam Roll

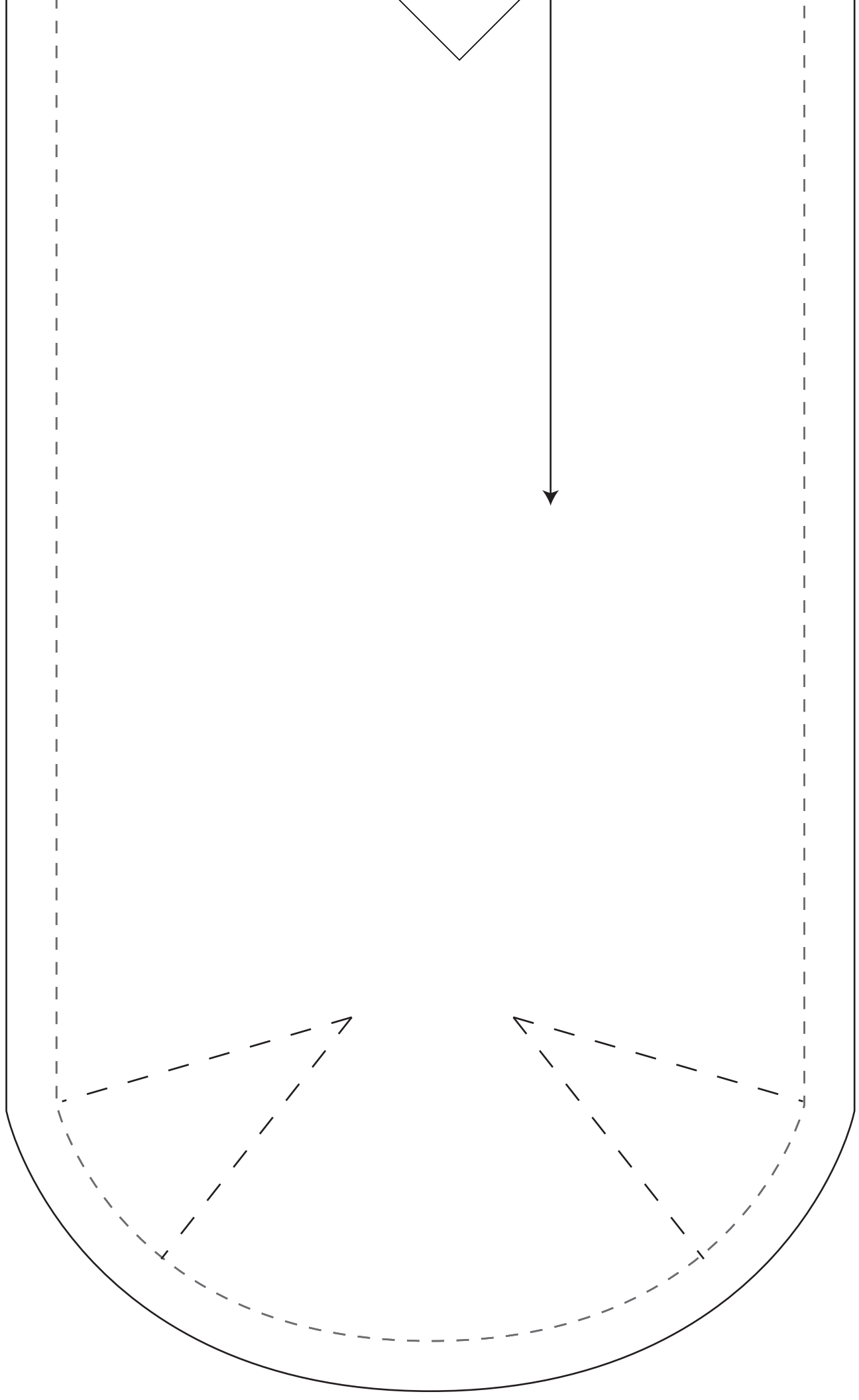
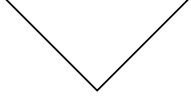
- Cut:
- 1 Piece Wool
 - 2 Pieces Batting
 - 3 Pieces Muslin

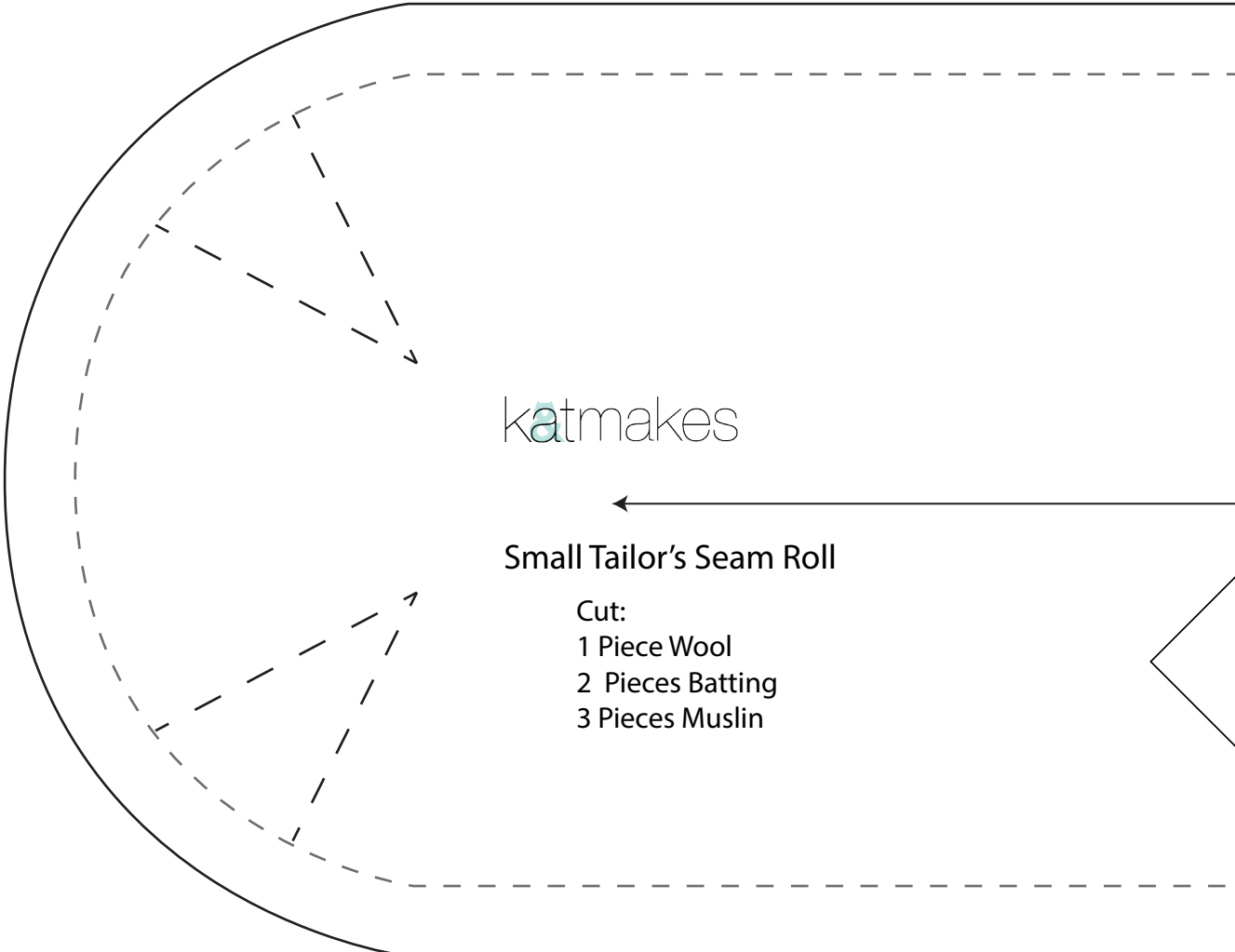


katmakes

Tailor's Ham

- Cut:
- 1 Piece Wool
- 2 Pieces Batting
- 3 Pieces Muslin

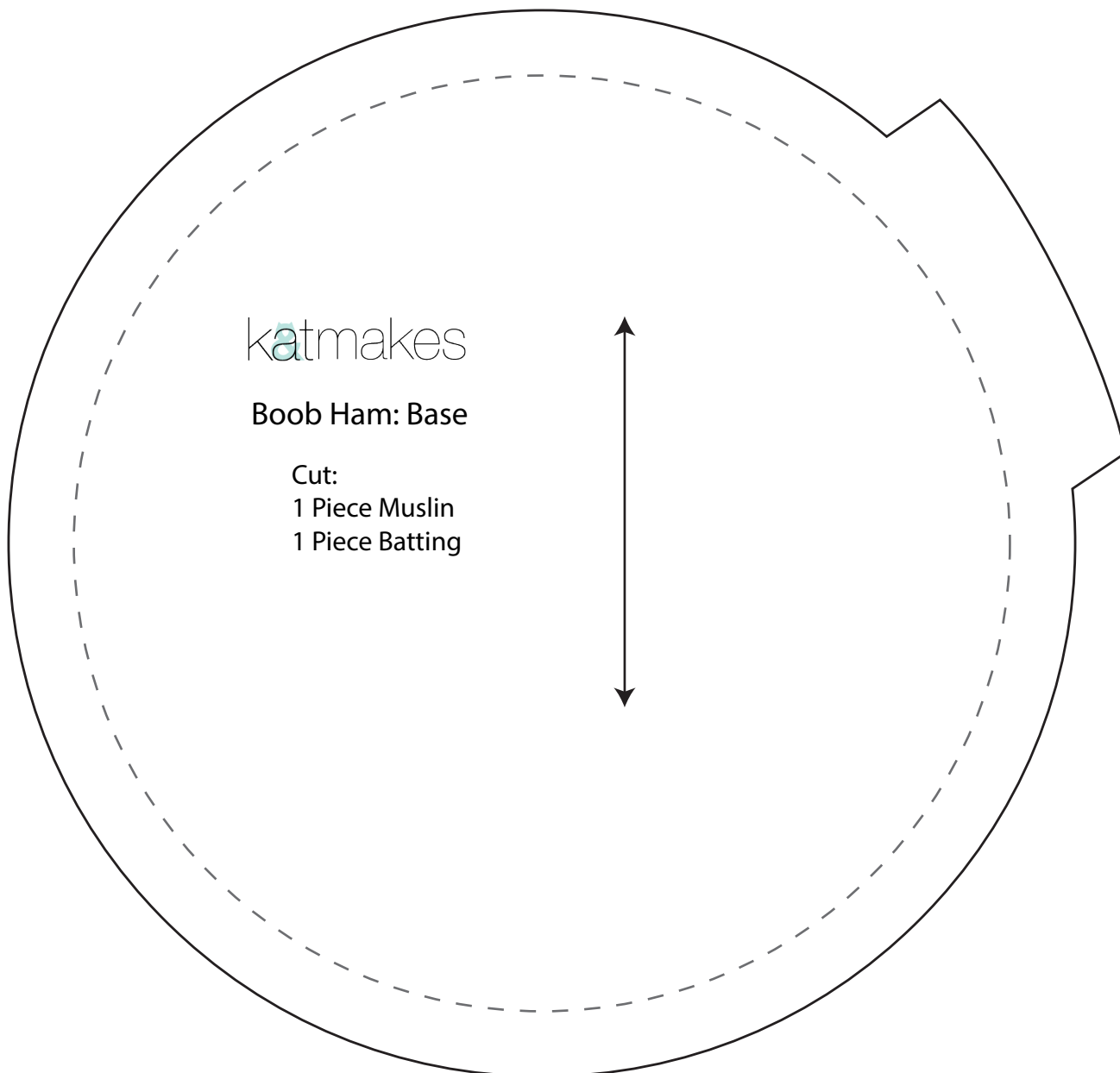
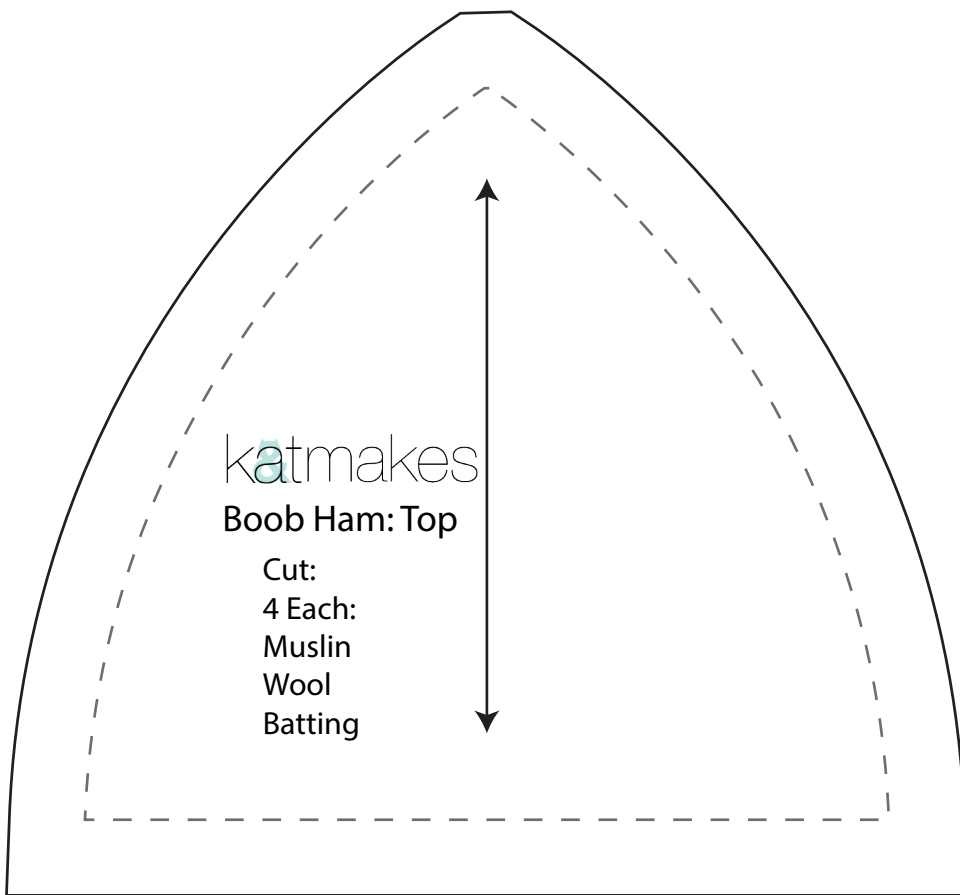


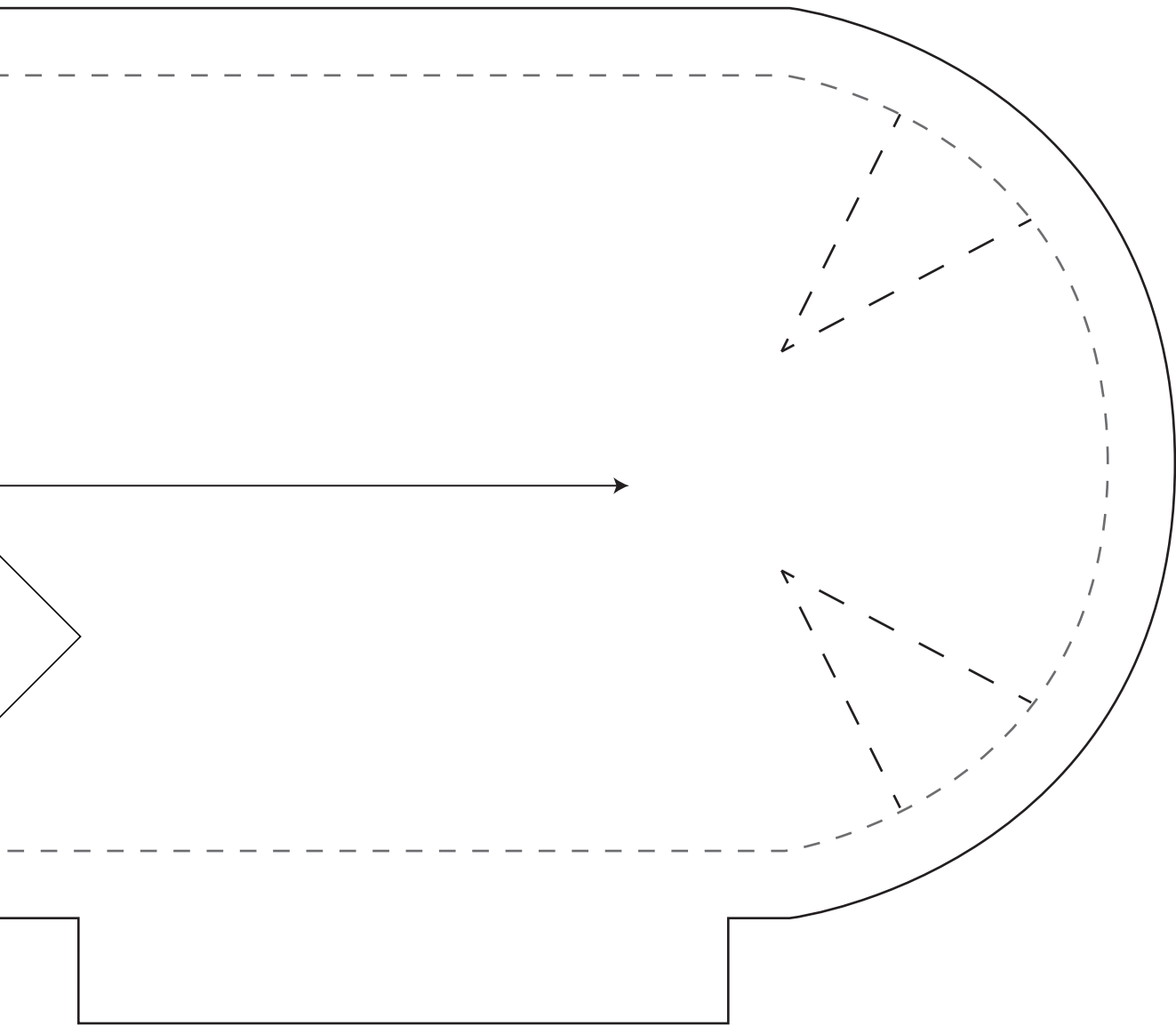


katmakes

Small Tailor's Seam Roll

- Cut:
- 1 Piece Wool
 - 2 Pieces Batting
 - 3 Pieces Muslin





katmakes

Visit katmakes.com for the full Tailor's Ham Tutorial, and email katherine.klebenow@gmail.com with questions.

Find me on instagram! @kat.makes